

N

W. A. HARRISON
REF: DWG. NO. 21-129

OLLIE RICE
REF: DWG. NO. 21-126

GEORGE W. ARNOLD

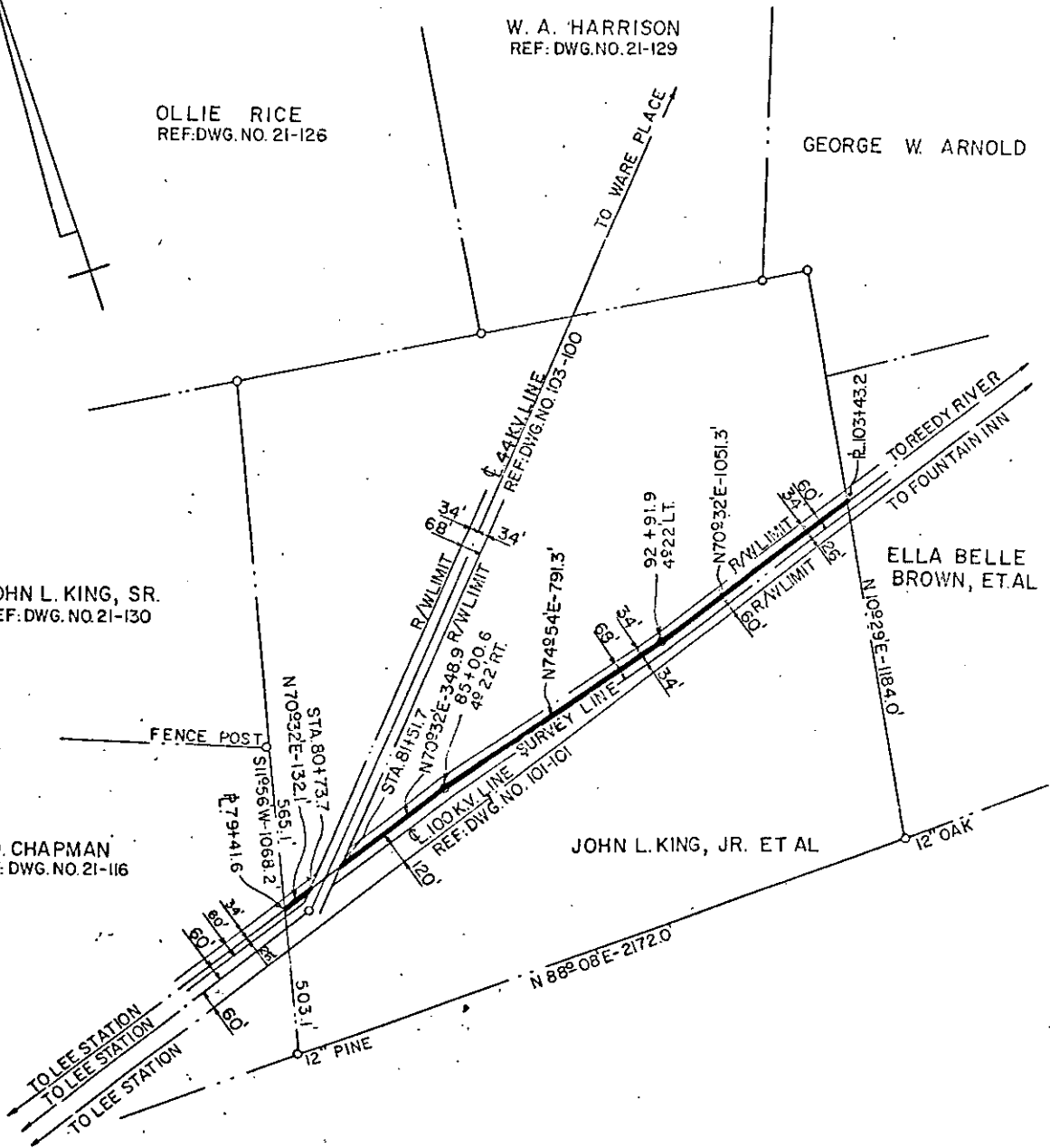
JOHN L. KING, SR.
REF: DWG. NO. 21-130

FENCE POST

J. D. CHAPMAN
REF: DWG. NO. 21-116

JOHN L. KING, JR. ET AL

ELLA BELLE
BROWN, ET AL



DUKE POWER COMPANY
LEE-REEDY RIVER
TRANSMISSION LINE
CROSSING PROPERTY OF
JOHN L. KING, JR. ET AL
Near WILLIAMSTON, S.C.
OAKLAWN TOWNSHIP
GREENVILLE COUNTY

SCALE: 1"=500' AUGUST 10, 1967
BOOK NO. 953 FILE NO. 36-40

Recorded August 18th., 1967 At 3:35 P.M. # 5486--

21
30
54