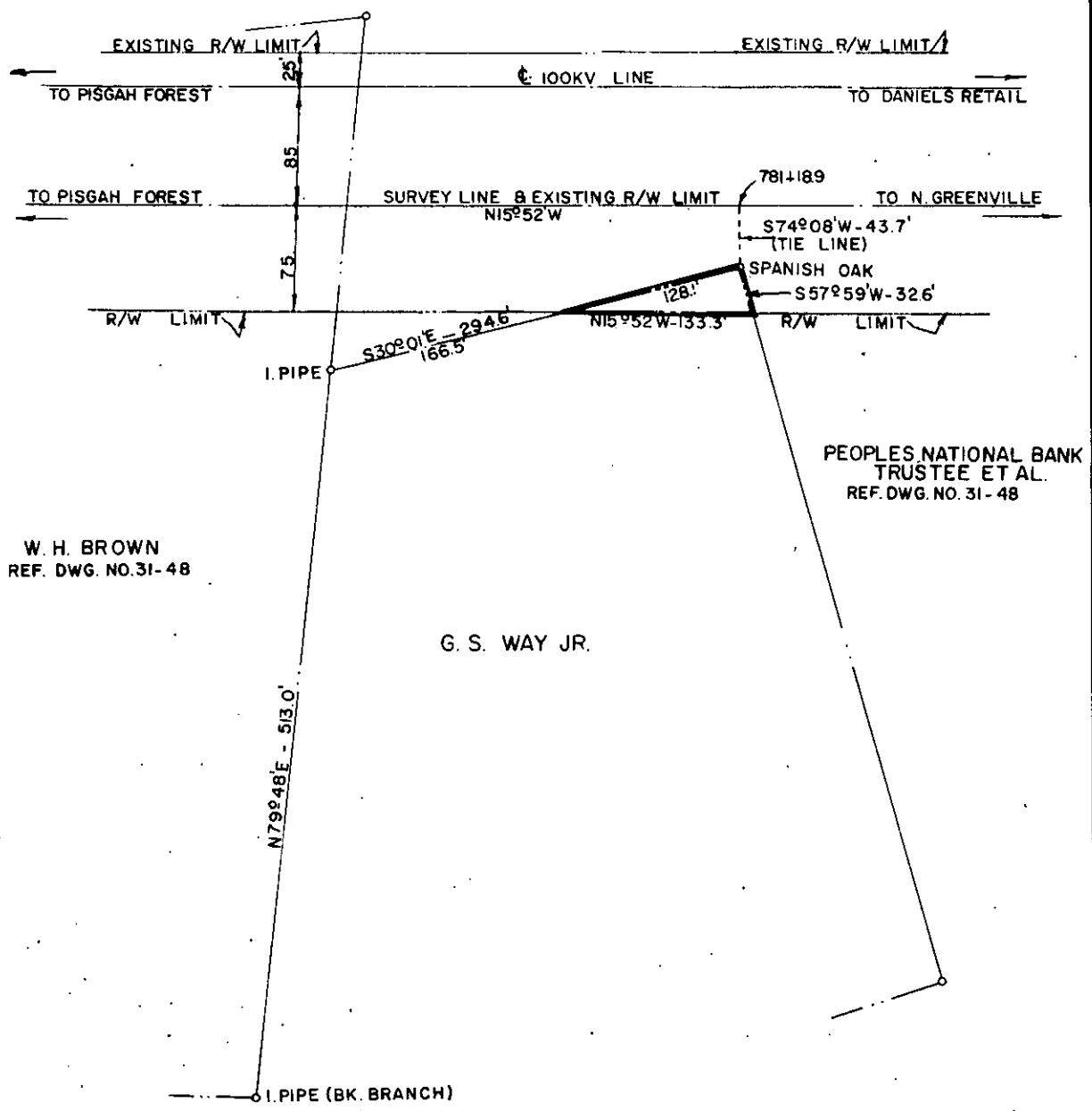


PEOPLES NATIONAL BANK TRUSTEE ET AL.  
REF. DWG. NO. 31 - 48



W. H. BROWN  
REF. DWG. NO. 31-48

G. S. WAY JR.

PEOPLES NATIONAL BANK  
TRUSTEE ET AL.  
REF. DWG. NO. 31 - 48

DUKE POWER COMPANY  
N. GREENVILLE - PISGAH FOREST  
TRANSMISSION LINE  
CROSSING PROPERTY OF  
G. S. WAY JR.  
CLEVELAND TOWNSHIP  
GREENVILLE COUNTY, S.C.

Recorded January 11th., 1966 At 9:46  
A.M. # 20383

SCALE: 1" = 100'  
BOOK NO. 825

NOVEMBER 29, 1965  
FILE NO. 31-53