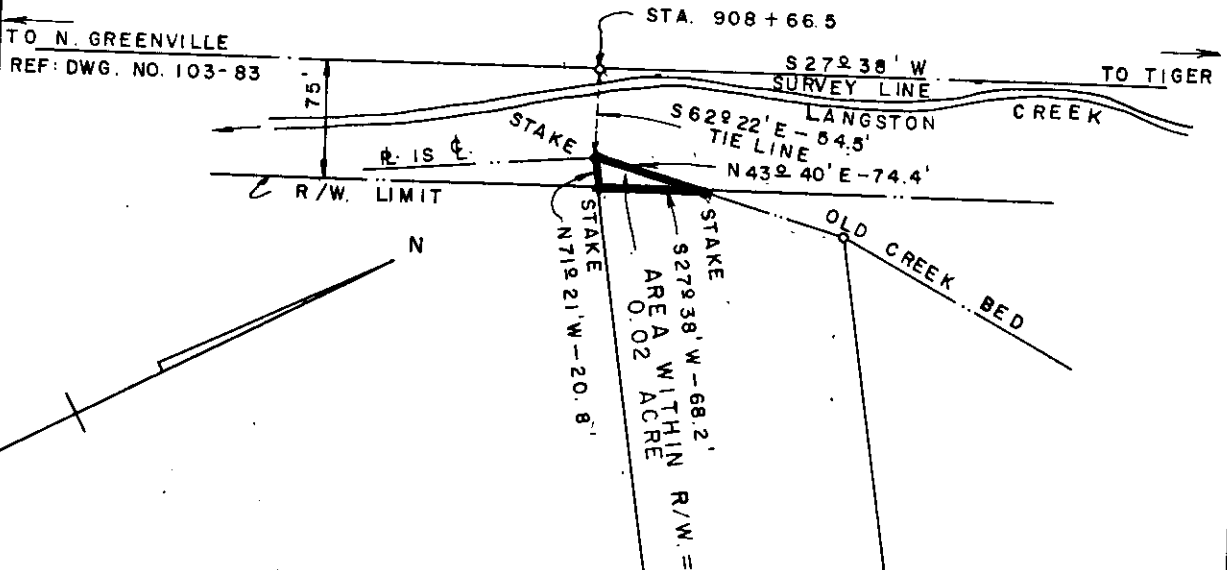


ALPHA B. CHILDRESS
REF: DWG. NO. 24-115



MARTIN J. CAUDELL
TRACT NO. 30
REF: DWG. NO. 24-45

R. L. BINGHAM
TRACT NO. 31

LEWIS M. CAMPBELL
TRACT NO. 32

Recorded January 21, 1964 At 3:36 P.M. # 20488

DUKE POWER COMPANY
TIGER - NORTH GREENVILLE
TRANSMISSION LINE
CROSSING PROPERTY OF
R. L. BINGHAM
PARIS MOUNTAIN TOWNSHIP
GREENVILLE COUNTY, S.C.

WOODLAWN DRIVE

SCALE - 1" = 100'
BOOK NO. 664

SEPTEMBER 13, 1963
FILE NO. 24-44