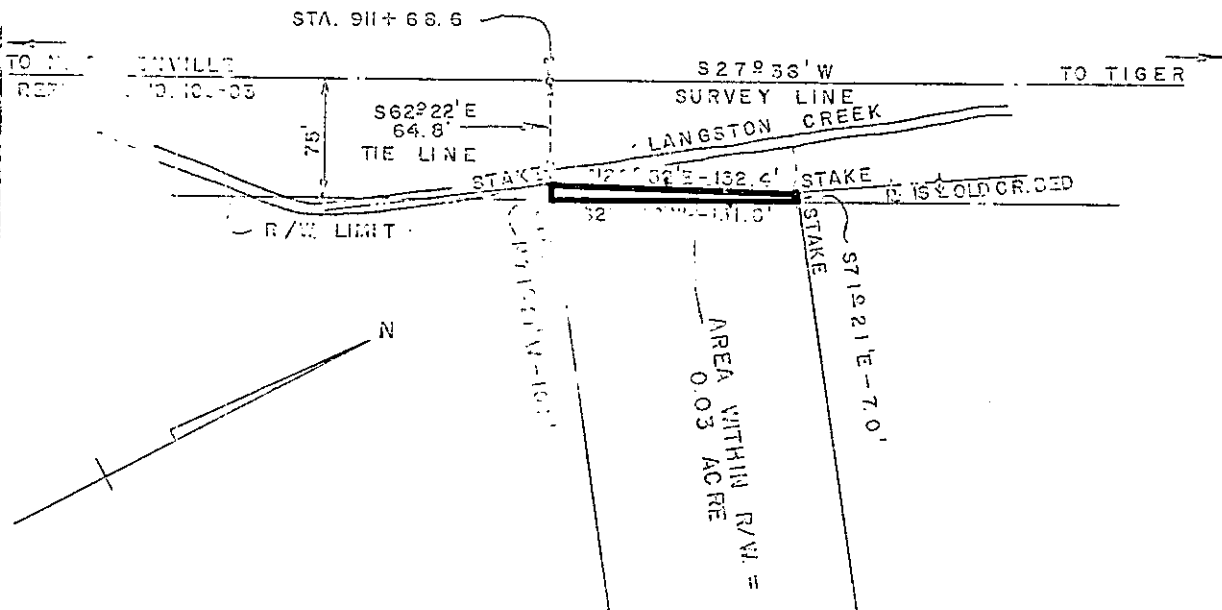


ALPHA B. CHILDRESS
REF. DWG. NO. 23-115



H. C. HARD
TRACT NO. 23
REF. DWG. NO. 24-67

LUKE L. CAUDELL
TRACT NO. 29

MARTIN J. CAUDELL
TRACT NO. 30
REF. DWG. NO. 24-45

DUKE POWER COMPANY DEC 11 1963
 TIGER-NORTH GREENVILLE
 TRANSMISSION LINE
 CROSSING PROPERTY OF
 LUKE L. CAUDELL
 PARIS MOUNTAIN TOWNSHIP
 GREENVILLE COUNTY, S. C.

SCALE: 1"=100' SEPTEMBER 1963
BOOK NO. 738 FILE NO. 23-

Recorded December 11, 1963 At 4:13 P.M. # 16916