

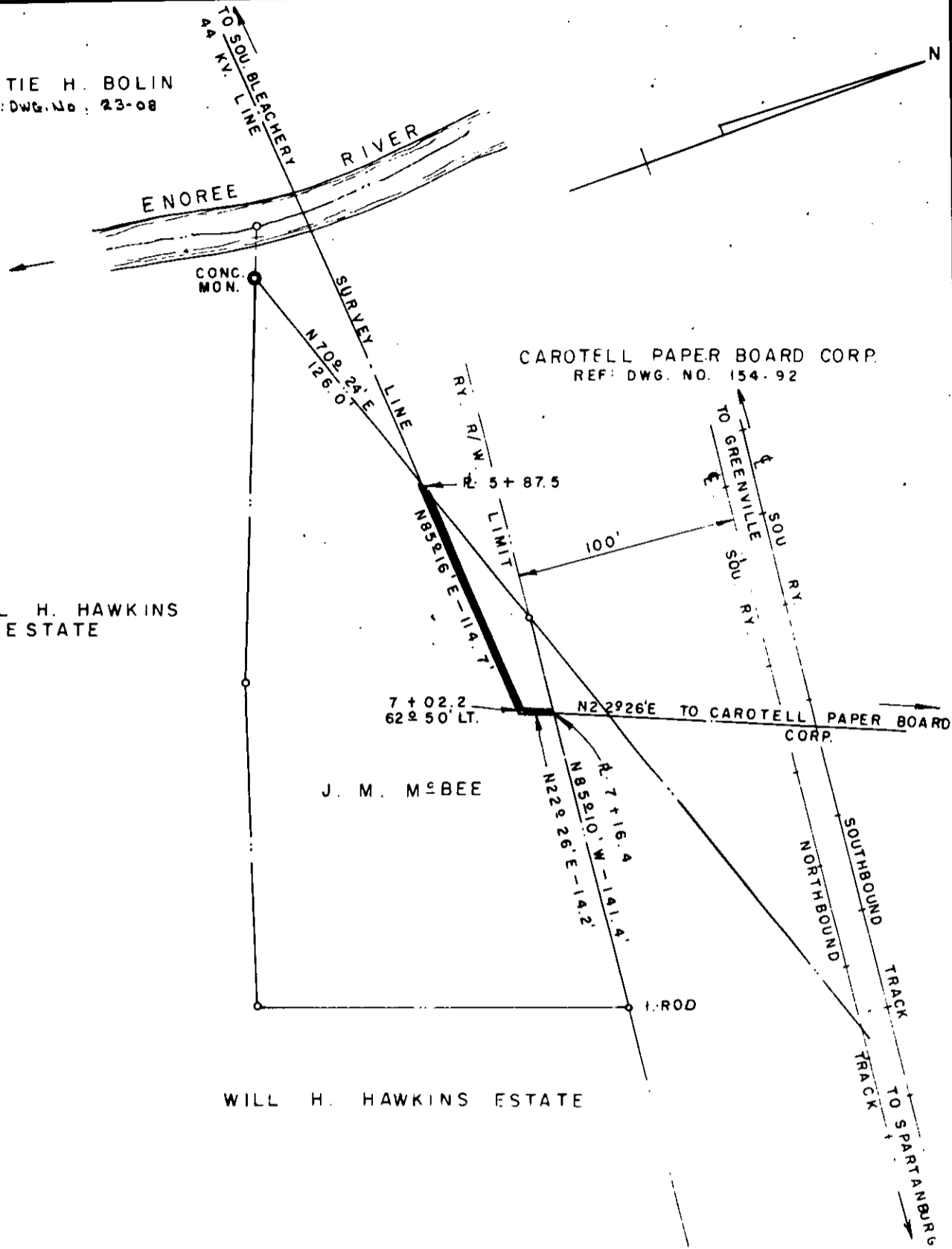
KATIE H. BOLIN
REF: DWG. No. 23-08

WILL H. HAWKINS
ESTATE

J. M. MCBEE

WILL H. HAWKINS ESTATE

CAROTELL PAPER BOARD CORP.
REF: DWG. NO. 154-92



DUKE POWER COMPANY
CAROTELL PAPER BOARD CORPORATION
TRANSMISSION LINE
CROSSING PROPERTY OF
J. M. MCBEE
CHICK SPRINGS TOWNSHIP
GREENVILLE COUNTY, S.C.

Recorded June 10th, 1963 at 10:04 A.M.
#31795

SCALE: 1" = 60'
BOOK NO. 707

JUNE 3, 1963
FILE NO 23-03