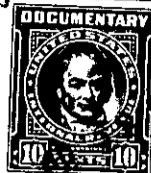
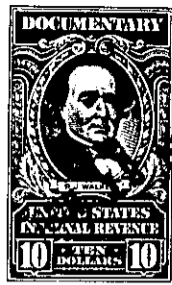


STATE OF ILLINOIS  
COUNTY OF C O O K



KNOW ALL MEN BY THESE PRESENTS, That MARTIN-MARIETTA CORPORA-  
TION, a Maryland corporation, with its principal office located at  
Baltimore, Maryland, successor by consolidation on October 10, 1961  
to American-Marietta Company, an Illinois corporation, with its  
principal office located at Chicago, Illinois, in consideration of  
the sum of Forty Two Thousand Five Hundred (\$42,500.00) Dollars to  
it paid by BALLARD-RICE PRESTRESSED CORP., a South Carolina cor-  
poration, with its principal office and place of business at  
Greenville, South Carolina, has granted, bargained, sold and re-  
leased, and by these presents does grant, bargain, sell and release  
unto the said BALLARD-RICE PRESTRESSED CORP., its successors and  
assigns, the following described land in the County of Greenville,  
State of South Carolina, to-wit:



All that certain piece, parcel or lot of land on the  
southern side of Greer Drive, in Butler Township, County  
of Greenville, State of South Carolina, containing 6.65  
acres, according to plat made by Piedmont Engineering  
Service, dated February 6, 1957, and having according  
to said plat the following metes and bounds, to wit:

BEGINNING at a point in the center of Greer Drive,  
which point is 50 feet in a northeasterly direction  
from the center of the C. & W. C. Railroad track and  
running thence with the center of Greer Drive N. 53-45  
E. 892.9 feet to pin; thence S. 36-15 E. 225 feet to  
pin in line of other property of Florrie V. Greer;



-299- 292-1-14.1 + 14.2