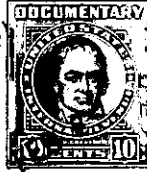
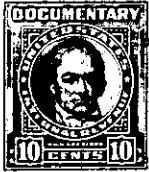
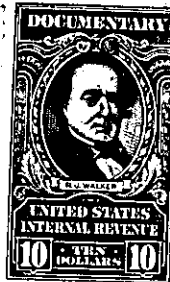
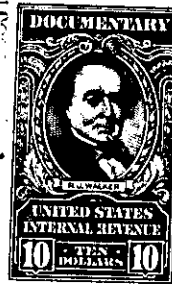


BOOK 607 PAGE 522

The State of South Carolina,

COUNTY OF GREENVILLE

FEB 8 12 31 PM 1961



KNOW ALL MEN BY THESE PRESENTS, That

CHESTNUT HILLS, INC.

a corporation chartered under the laws of the State of South Carolina

and having its principal place of business at

Greenville in the State of South Carolina for and in consideration

of the sum of Twenty-Two Thousand, Nine Hundred Six and 66/100 Dollars,

and assumption of mortgage to Prudential Insurance Company of America, upon which there is a present outstanding balance of \$9,593.34,

to it in hand duly paid at and before the sealing and delivery of these presents by the grantee

hereinafter named (the receipt whereof is hereby acknowledged), has granted, bargained, sold and

released, and by these presents does grant, bargain, sell and release unto John L. Sloan,his heirs and assigns:

ALL that piece, parcel or tract of land in Greenville County, State of South Carolina, in Grove Township, as shown on plat of property of Virginia W. Payne, made by C. M. Furman, Jr., Civil Engineer, October 25, 1933, and having, according to said plat, the following metes and bounds:

BEGINNING at a point in the center of the intersection of the Fork Shoals Road and another road, at a point marked, "begin", and running thence along the center of said road, N. 31-15 W. 433 feet to a point in said road; thence N. 81-20 E. 400 feet to a point; thence S. 32 E. 95 feet to a point; thence N. 82-30 E. 630 feet to a point; thence N. 36-10 W. 1610 feet to a point; thence S. 67-10 W. 550 feet to a point in the center of said Fork Shoals Road; thence S. 78-45 W. 825 feet to a point; thence N. 82-35 W. 1160 feet to a point; thence S. 25-40 W. 1200 feet to a point; thence S. 69-50 E. 85 feet to a point; thence S. 50-07 W. 195 feet to a point; thence S. 26-07 W. 410 feet to a point; thence N. 69-30 W. 85 feet to a point; thence along Reedy Fork Creek as the line, S. 28 W. 365 feet to a point; thence S. 16-30 W. 660 feet to a point; thence S. 17-15 W. 185 feet to a point; thence S. 45-15 W. 297 feet to a point; thence S. 61-15 W. 160 feet to a point; thence S. 2-50 E. 635 feet to a point; thence S. 53-15 E. 610 feet to a point; thence N. 86-45 E. 246 feet to a point; thence N. 63-45 E. 132 feet to a point; thence N. 35-25 W. 87 feet to a point; thence N. 16-20 E. 1046 feet to a point; thence N. 78-50 E. 2153 feet to a point; thence N. 11-35 E. 890 feet to a point; thence N. 72-40 E. 46 feet to a point; thence N. 87-40 E. 448 feet to a point; thence N. 89-25 E. 315 feet to a point, the beginning corner. Being the same property conveyed to the Grantor by deed of Virginia W. Payne dated September 30, 1955, and recorded in the R.M.C. Office for Greenville County, S. C. in Deed Book 536 at page 17.

(OVER)

584-2-1-2