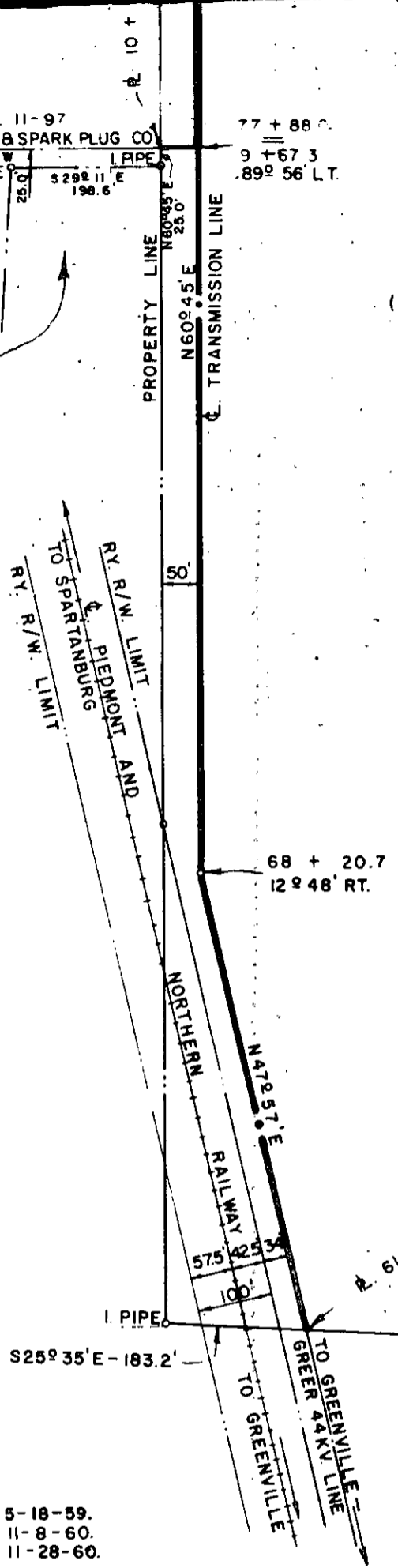


REF: DWG NO. 11-97
 TO BOWERS BATTERY & SPARK PLUG CO.
 SUBSTA LOT N 29° 11' W
 I PIPE 25.0' 9 29° 11' E 198.6'

TEXTRON, INCORPORATED
 HOMELITE DIVISION
 GREER PLANT
 FORMERLY
 (DANIEL CONSTRUCTION COMPANY, INC.)

BOOK 539 PAGE 246

GREER GAS & APPLIANCE COMPANY



CLARENCE SEXTAN

NOTE: REVISED 5-18-59.
 REVISED 11-8-60.
 REVISED 11-28-60.

DUKE POWER COMPANY
 RIGHT OF WAY FOR TRANSMISSION LINE
 AND SUBSTATION LOT TO SERVE
 TEXTRON, INCORPORATED
 HOMELITE DIVISION, GREER PLANT.
 FORMERLY
 (DANIEL CONSTRUCTION COMPANY, INC.)
 GREER, S.C.

JAN 31 1967

SCALE: 1" = 200' GREENVILLE COUNTY MAY 1, 1959
 BOOK NO. 539 FILE NO. 52-180

Recorded January 31st, 1961 at 2:57 P.M. #19077