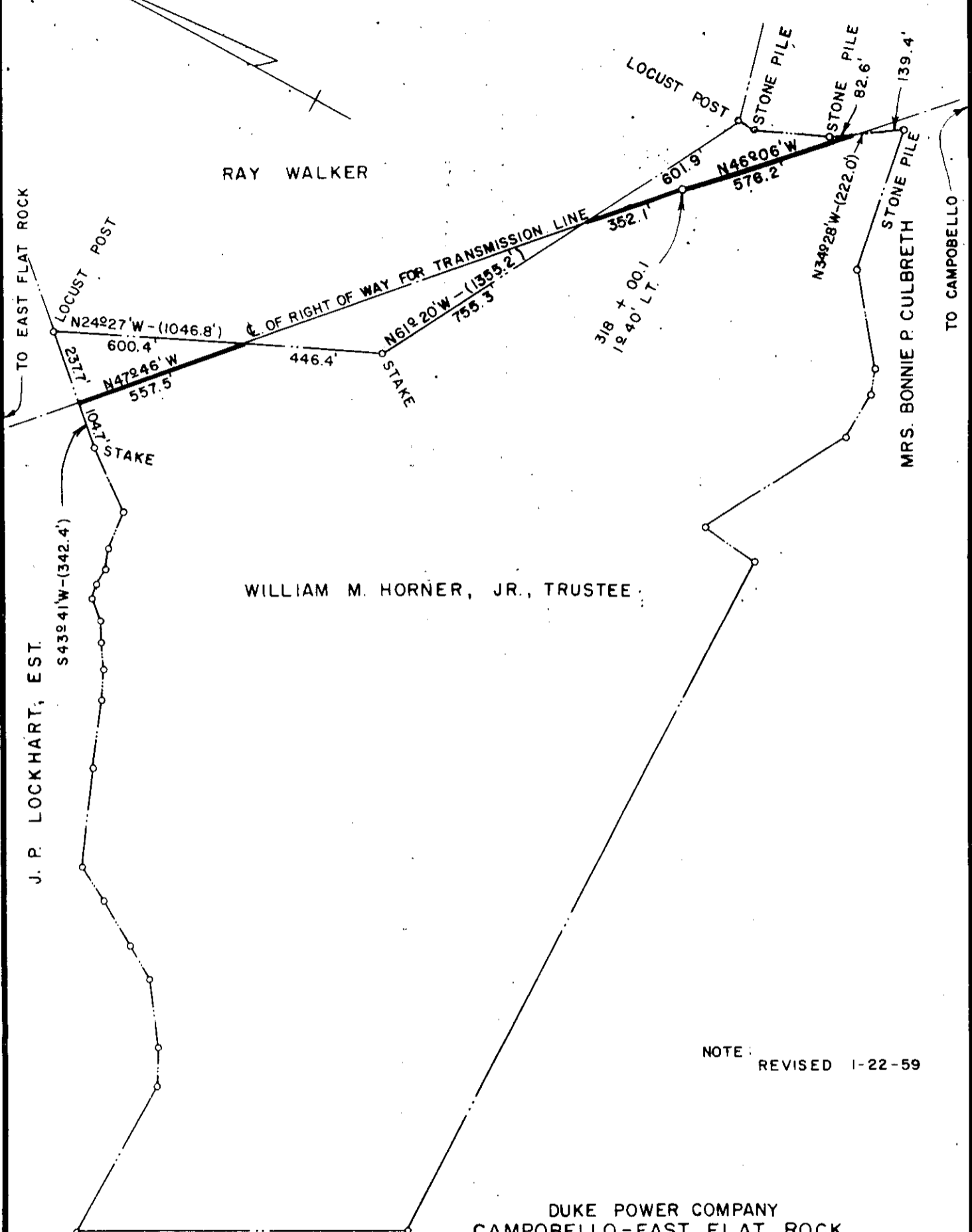


N



NOTE: REVISED 1-22-59

DUKE POWER COMPANY
 CAMPOBELLO-EAST FLAT ROCK
 TRANSMISSION LINE
 ACROSS PROPERTY OF
 WILLIAM M. HORNER, JR., TRUSTEE
 GLASSY MT. TOWNSHIP, GREENVILLE COUNTY
 NEAR LANDRUM, S. C.

SCALE: 1" = 400'
BOOK NO. 524

MAY 12, 1958
FILE NO. 17-31