

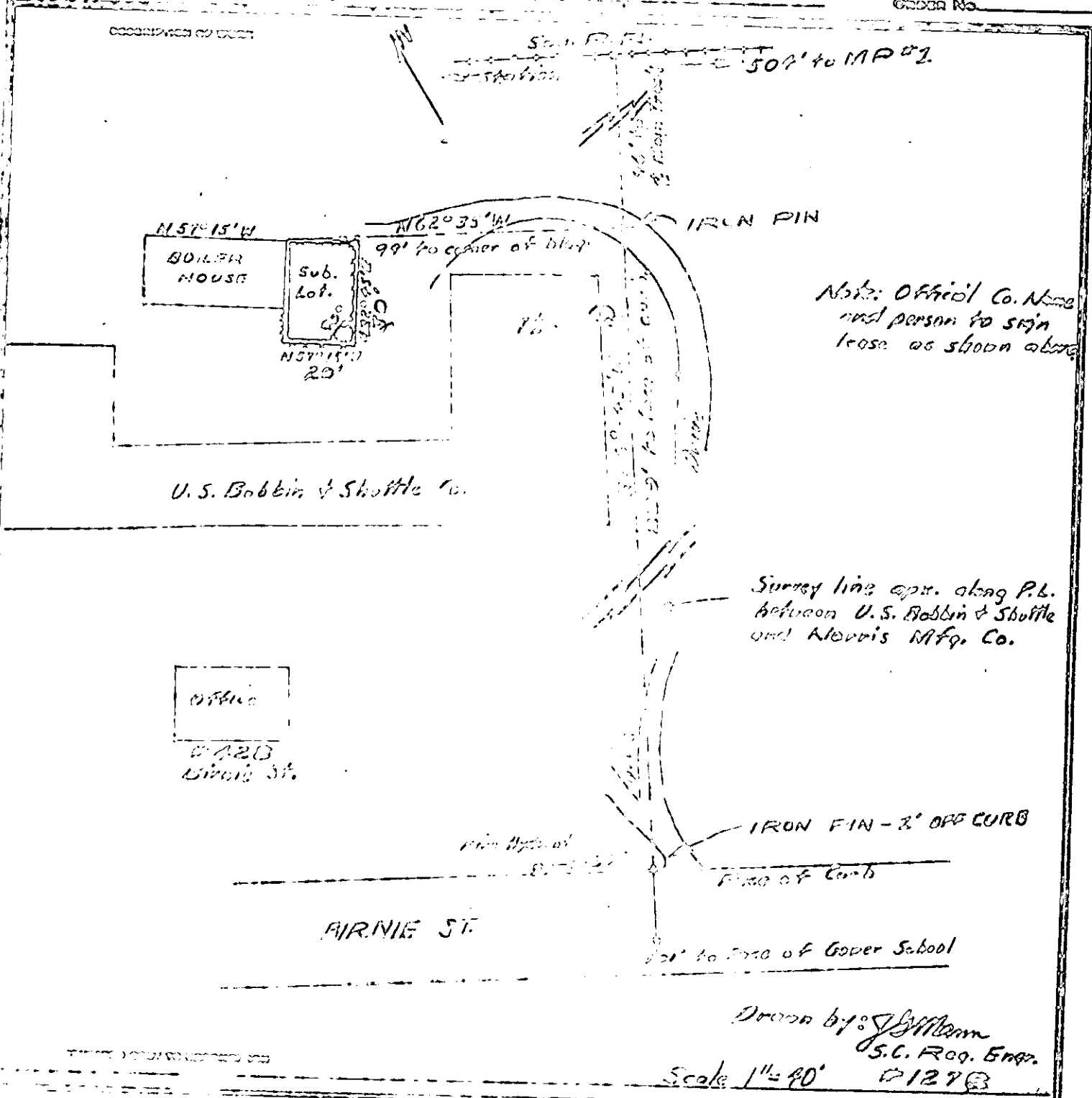
DUKE POWER COMPANY  
SOUTH CAROLINA

U. S. Bobbin & Shuttle Co. - 20x30' Substation Lease

LOCATION 423 Birnie St. Greenville, S.C. DATE 3-8-57

REQUESTED BY Jack Locke, President

ORDER No.



Note: Official Co. Name and person to sign lease as shown above

Surrey line apr. along P.L. between U. S. Bobbin & Shuttle and Morris Mfg. Co.

Drawn by: *J. Williams*  
S.C. Reg. Engr.  
#1273

Scale 1" = 40'

Lease & Plat recorded September 25th, 1957 at 1:43 P.M. # 22599 DATE