

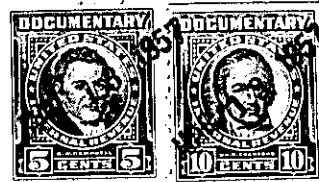
State of South Carolina,
Greenville County

FILED
GREENVILLE CO. S. C.

BOOK 573 PAGE 19

MAR 13 12 17 PM 1957

OLLIE H. FORTSWORTH
R. M. C.



Know all Men by these Presents, That

I, Edward L. Chandler, Jr.

in the State aforesaid,

in consideration of the sum of EIGHT THOUSAND TWO HUNDRED FIFTY AND NO/100--- Dollars

to me paid by JOHN W. BELL and LAURA E. BELL, their heirs and assigns

in the State aforesaid, the receipt whereof is hereby acknowledged, have granted, bargained, sold and released, and by these presents do grant, bargain, sell and release unto the said

John W. Bell and Laura E. Bell, their heirs and assigns, forever,

All that piece, parcel or lot of land in Butler Township, Greenville County, State

of South Carolina, being known and designated as the property of Edward L. Chandler, Jr., according to a plat thereof by H. S. Brockman, Engineer, containing 25.20 acres, more or less, recorded in Plat Book II at page 37 in the R. M. C. Office, and having, according to said plat, the following metes and bounds, to-wit:

BEGINNING at an old pin on southern edge of a surfaced road; thence N. 64-30 E. 165.7 feet to corner on southern edge of said road; thence N. 83-30 E. 198 feet to a corner in said road; thence S. 79-15 E. 165 feet to corner in said road; thence S. 44-38 E. through a new pin 28 feet from corner in said road, 114.2 feet to a corner on Ebenezer M. E. Church line; thence S. 4-52 W. along old school lot line, 138 feet to a corner of old school lot; thence S. 44-38 E. along old school lot line 221.8 feet to an old pin on a line of property now or formerly owned by J. W. Baker; thence S. 8-01 W. along a line of property now or formerly owned by J. W. Baker, 530 feet to a 36 inch water oak, corner on bank of Rocky Creek; thence up Rocky Creek with creek as the line by the traverse line S. 78-15 W. 137 feet to a traverse corner 35 feet north of the line corner in center of Rocky Creek; thence up the creek with curve as line by the traverse line S. 58-11 W. 172 feet to the traverse corner 45 feet north of the corner in the center of Rocky Creek; thence up Rocky Creek with creek as the line by the traverse line S. 6-06 W. 189 feet to traverse corner 40 feet west of corner of center of Rocky Creek; thence up Rocky Creek with Creek as the line to the traverse line S. 39-31 W. 275 feet to traverse corner 20 feet northwest of corner in center of Rocky Creek; thence up Rocky Creek with creek as the line by the traverse line S. 81-47 W. 143 feet to the traverse corner 35 feet northwest of the corner in center of creek; thence up Rocky Creek with creek as the line by the traverse line N. 58-57 W. 400 feet to traverse corner 30 feet north of corner in center of Rocky Creek; thence up Rocky Creek with creek as the line by traverse line N. 41-51 W. 165 feet to traverse corner 15 feet north of corner in Center of Rocky Creek; thence up Rocky Creek with creek as line by traverse line N. 1-54 E. 100 feet to traverse corner 15 feet east of corner in center of Rocky Creek with creek as the line by traverse line N. 27-26 E. 137 feet to the traverse corner 20 feet east of corner in center of Rocky Creek; thence up the creek with creek as the line by the traverse line N. 62-26 E. 148 feet to the traverse corner

(continued on next page)