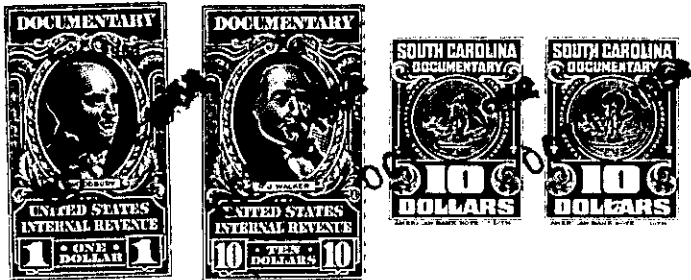


VCL 510 No. 77

THE STATE OF SOUTH CAROLINA,
COUNTY OF GREENVILLE



KNOW ALL MEN BY THESE PRESENTS. That I, H. D. BURNS,

in the State aforesaid. in consideration of the sum of TEN THOUSAND AND NO/100 - -
- - (\$10,000.00) - - - - - Dollars

to me in hand paid at and before the sealing of these presents
by James R. Mann, As Trustee,

(the receipt whereof is hereby acknowledged), have granted, bargained, sold and released, and by these
presents do grant, bargain, sell and release unto the said JAMES R. MANN, AS TRUSTEE,
His Successors and Assigns,

all that piece, parcel or ~~xxx~~ tract of land in Cleveland Township, Greenville
County, State of South Carolina, situate, lying and being on both sides of
Devil's Creek, waters of Middle Saluda River, and having the
following metes and bounds, to-wit:

BEGINNING at a stone on the Southeastern corner of this tract and at the corner of land formerly belonging to Henderson and now or formerly belonging to Saluda Land and Lumber Company, and running thence N. 59-43 W. 5.60 chains to the head of a branch; thence N. 81-30 W. 200 feet; thence N. 76-20 W. 200 feet to a point in the said branch; thence down the said branch, S. 49-45 W. 175 feet to a point on the Eastern side of said branch, near its entrance with Devil's Fork Creek; thence N. 19-30 W. and crossing Devil's Fork Creek 270 feet to a stone; thence up the said Creek, N. 27 E. 106 feet to a point; thence N. 59-30 W. 136 feet to a point; thence N. 87-20 W. 215 feet to a point; thence S. 72 W. 178 feet to a stone 3x at the head of a hollow; thence N. 51-15 W. 1130 feet to a stone; thence N. 64 E. 132 feet to a Chestnut Oak on top of the mountain, at the common corner of this tract and the J. W. Smith tract; thence S. 43-15 W. 23.00 chains to a Hickory; thence N. 38 E. 15 chains to a stone on the Harriett Johnson line; thence N. 35-15 E. 3.21 chains to a Dogwood; thence N. 28-42 E. 10.24 chains to a Chestnut Oak; thence N. 7 W. 16.00 chains to a Chestnut Oak; thence S. 41 E. 11.60 chains to a Post Oak; thence N. 55-15 W. 72.40 chains to a stone; thence S. 76-20 E. 4.18 chains to a stone; thence S. 38-17 E. 3.72 chains to a stone; thence S. 54-05 E. 28.70 chains to a stone; thence S. 70-50 W. 15.80 chains to a stone; thence S. 43-45 W. 7.10 chains to a stake; thence S. 72-45 W. 9.80 chains to a stone; thence S. 26-05 W. 79.82 chains to the beginning corner, and containing 523 acres, more or less, and being bounded on the East by Saluda Land and Lumber Company; on the South by Saluda Land and Lumber Company and Cantrell; on the West by Johnson and Bennyfield; and on the North by Mullinax; excepting, however, from the above conveyance approximately 2 acres heretofore conveyed by the Grantor herein by Deeds recorded in the R.M. C. Office for Greenville County in Deed Book 501, page 276 and Deed Book 424, page 398.

(over)