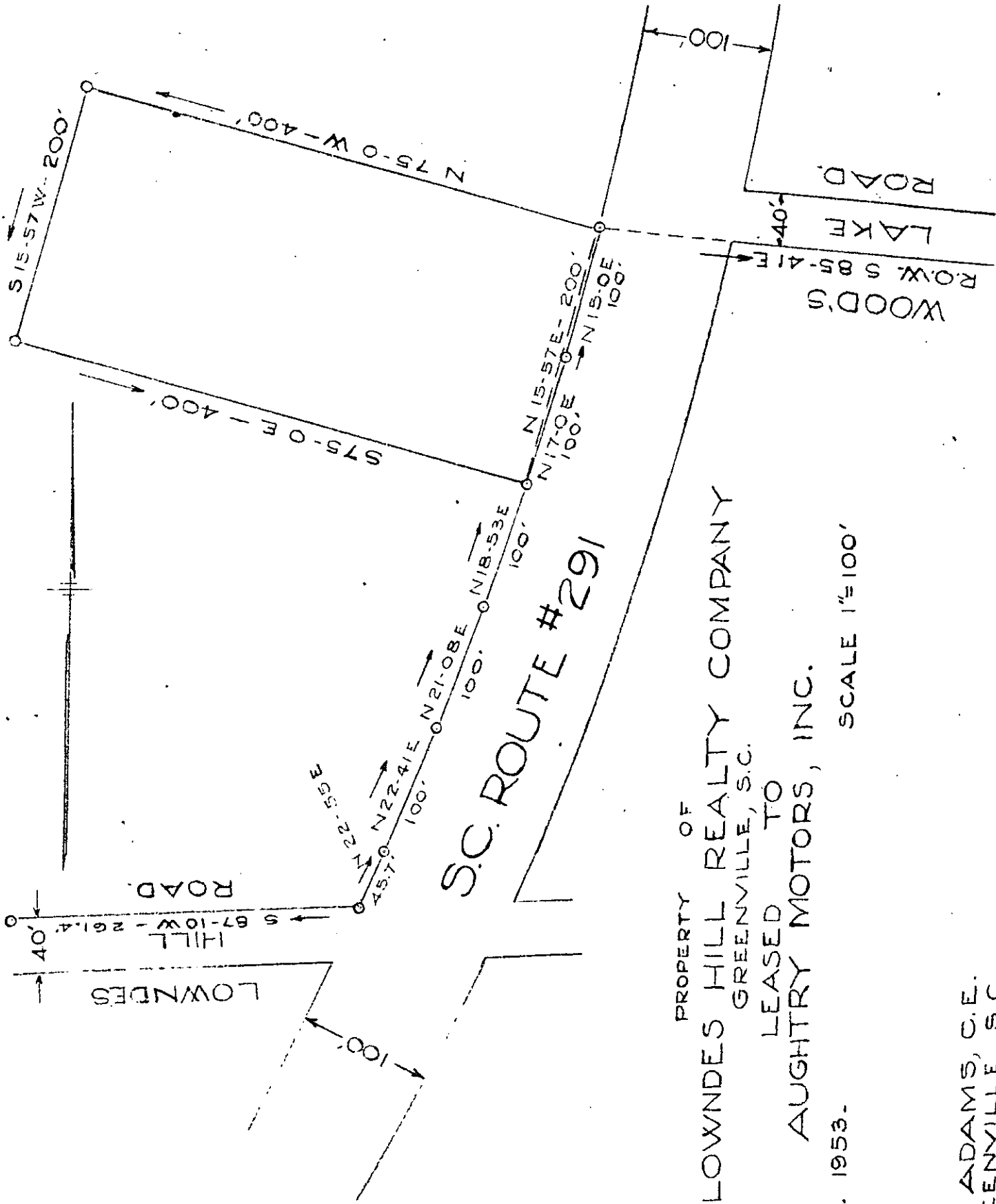


For Lease in connection with this Plat See Deed Book 479, page 345



PROPERTY OF
 LOWNDES HILL REALTY COMPANY
 GREENVILLE, S.C.
 LEASED TO
 AUGHTRY MOTORS, INC.

FEB. 1953.

SCALE 1"=100'

T.C. ADAMS, C.E.
 GREENVILLE, S.C.