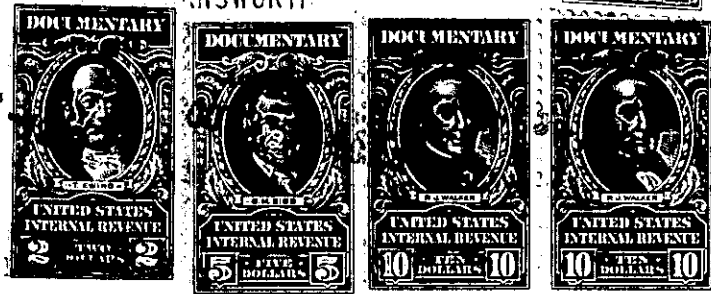


THE STATE OF SOUTH CAROLINA,
COUNTY OF Greenville

OCT 3 12 19 PM 1950

For True Consideration See Affidavit
Book 13 Page 195

OCT 3



KNOW ALL MEN BY THESE PRESENTS, That We, Della C. Stover, Maggie C. Cook, N. F. Carpenter, H. L. Carpenter, J. B. Carpenter, Mattie Leila Scott, J. S. Carpenter, heirs of Mattie L. Carpenter, deceased

in the State aforesaid, in consideration of the sum of
Ten Thousand Dollars & other considerations Dollars
to us in hand paid at and before the sealing of these presents
by Frank S. Owen

(the receipt whereof is hereby acknowledged), have granted, bargained, sold and released, and by these presents do grant, bargain, sell and release unto the said Frank S. Owen

all that piece, parcel or lot of land in Township, Greenville & Spartanburg
County, State of South Carolina, and being designated as tracts Nos. 7, 8, 11, 12, and 13 of the T. J. Earle Estate, as shown on Plat made by W.N. Willis, July 3rd, 1919, and having the following metes and bounds, to wit:

Beginning on an old abandoned road on South Pacolet River, Northwest corner of tract No. 5 and running thence N. 1.43 E. 99 feet; thence N. 12.14 E. 200 feet; thence N. 26.09 E. 175 feet; thence N. 26.39 E. 120 feet; thence N. 1.06 E. 225 feet to a stone, corners of tracts Nos. 7 and 13; thence with the line of tract No. 13 N. 86.50 W. 1070 feet to a stone; thence N. 67.40 W. 1043 feet to stake; thence N. 83.10 W. 682 feet to a stake; thence S. 45 W. 1586 feet to a stake; thence N. 37.10 W. 695 feet to a stake; thence N. 26.50 E. 1380 feet to a stake; thence N. 44 E. 874 feet to a stake; thence S. 78 15 E. 1353 feet to a stake on old Ballue road; thence S. 44.29 E. 240 feet to a stone; thence N. 75.50 E. 1690 feet to a stone; thence S. 30-15 E. 1426 feet to a stone; thence N. 38.13 E. 458 feet to corner of tract No. 9; thence S. 40 E. 126 feet; thence S. 68 E. 200 feet; thence S. 88.35 E. 815 feet; thence S. 47.53 E. 127 feet; thence S. 84 E. 232 feet; thence N. 52.50 E. 203 feet; thence N. 81.22 E. 425 feet; thence S. 51.48 E. 100 feet; thence S. 34.30 E. 156 feet; thence S. 4.10 W. 1051 feet to corner of Tract No. 6; thence with the line of tract No. 6 N. 87.30 W. 1074 feet to South Pacolet River; thence up South Pacolet river as the line, to the beginning corner, Tract No. 7 contains forty-eight and three-tenths (48.3) acres, more or less, Tract No. 8 (Mill Tract) contains forty-eight and three tenths (48.3) acres, more or less, Tract No. 11 contains fifty-four and four-tenths (54.4) acres, more or less, Tract No. 12, contains eighty-eight (88) acres, more or less and tract No. 13 contains twenty-eight (28) acres, more or less. For plat of this land, see Plat Book E., Page 140, R.M.C. Office for Greenville County.

